



Getting Started with...

GIMP

GIMP edits images and is a great free alternative to Adobe Photoshop

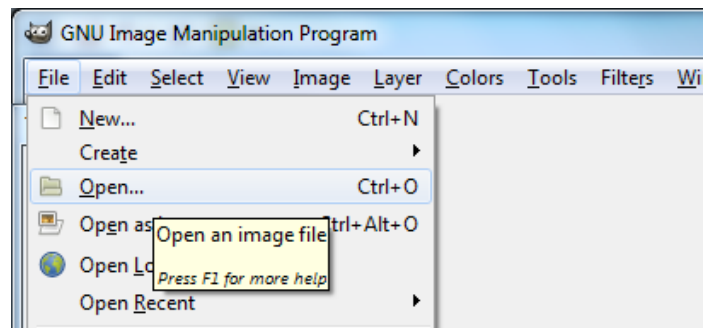
GIMP can do basic to very advanced image editing. Here are some examples of common uses:

- Take out dust spots from a scanned image
- Crop your image (get rid of unwanted edges)
- Adjust color (brighten or darken)

Basic photo editing in GIMP

Open your image file in GIMP

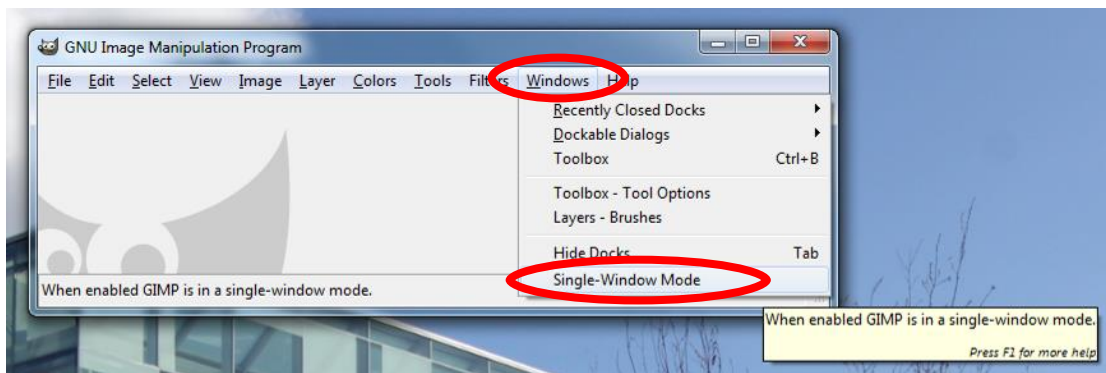
1. File
2. Open
3. Find your image based on where it is saved on your computer



Set up Single Window Mode

GIMP often launches in a multi-window mode. Switch it to Single Window Mode to make it more simple.

1. Click on **Windows** on the top menu bar
2. **Single Window Mode**



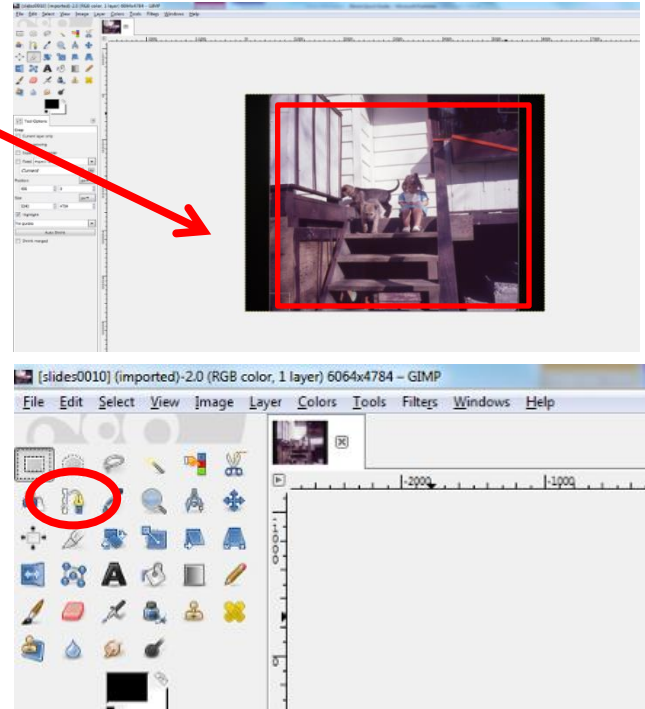
Crop or Trim your image

Draw a box around your image like in this example. Whatever is outside of the box will get erased.



1. Click on the **crop button**
2. Click & hold on one corner of your image to draw a box down to the opposite corner.
Let go and you'll have a crop box.
3. Press **Enter** to confirm your crop

*If you make a mistake press **ESC** and try again.*



Automatic Colour Adjustments in GIMP

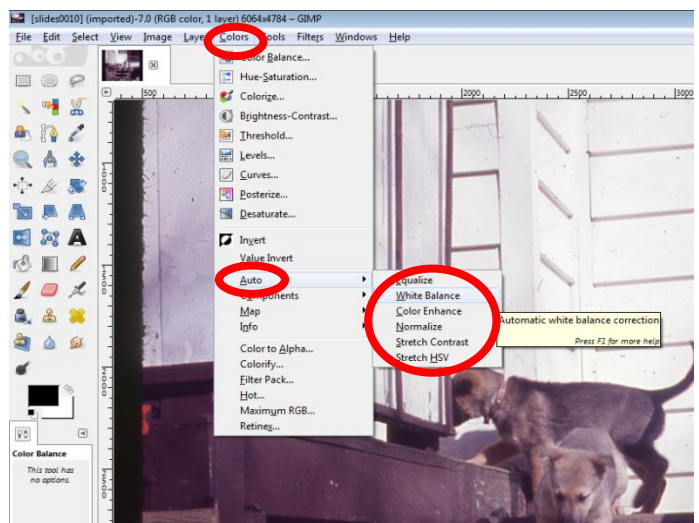
You can try various basic colour adjustments to see if they make your picture look better. Sometimes they make it look worse! If so, select **Edit** then **Undo** (or CTRL Z).

1. Click on **Colors**
2. Click on **Auto**

White Balance – good to start out with. Brings your image to a baseline

Color Enhance – can brighten up a dull picture

Equalize – contrast correction between whites and blacks. It can bring out details in your image



Want to print out your photos later?

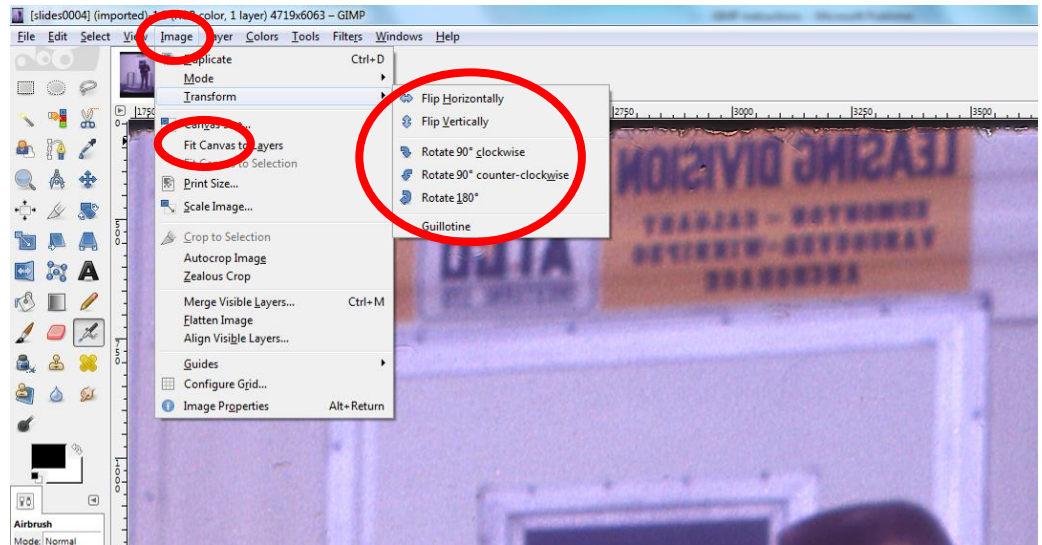
Your computer screen displays colours that will look slightly different from a print. Before you spend a lot of time getting your picture colours looking perfect, remember that it will not look *exactly* the same printed out as how it looks on your computer.

Rotating and Flipping Images

If you accidentally scan an image upside down or backwards, you can fix it.

1. Click **Image**
2. **Transform**
3. Pick an option

In this example the words are backwards so it needs to be flipped horizontally.



Fix Horizon Lines

Is your image a bit crooked? You can tilt it a bit so it looks level to the ground.

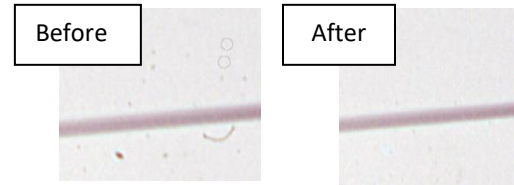
1. Click on the **Rotate Tool** button
(or press SHIFT+R)
2. Click on your image
3. Tilt the image by sliding the Angle bar



4. Click on **Rotate** to confirm

Fix Dust Spots & Scratches

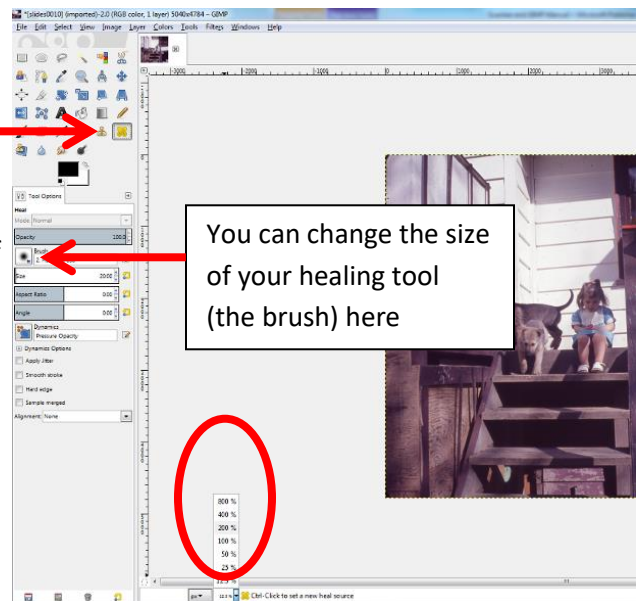
If you scan negatives or slides, it's important to clean them well before scanning. If a picture that's already been scanned has dust, you can fix some of it up in GIMP with the Healing tool.



Healing Tool

The healing tool takes part of the image from one area and blends that over the problem spot.

1. **Zoom into your image** to look at your problem area (circled in this example)
2. Click on the **Healing Tool** button
 - a. Change the size of your healing brush if you want
3. **CTRL click** to select your *source area* (a clean area on the image that looks just like your problem area, something the same colour or texture)
4. Click & draw on the problem area to 'heal' it based on the source area that you selected

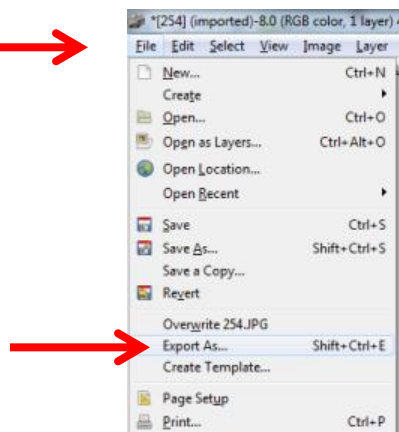


Finished editing? Export your image as a common file type

If you click on Save, GIMP will save your edited file as a file type that only works in GIMP (.xcf file).

To share your photos with others or to get them printed, you will need to export it as a more common file type.

1. File
2. Export As...

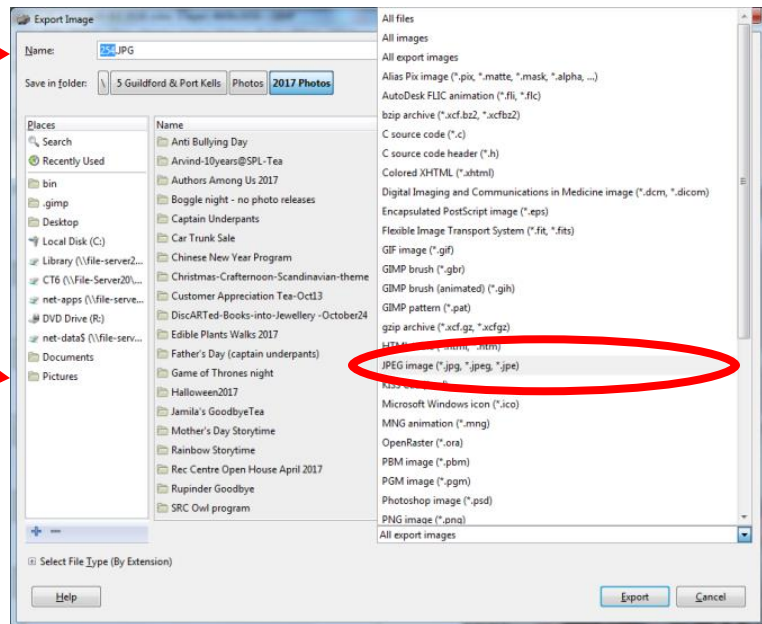


3. Name your file

4. Choose where you want to save the file to on your computer (your **Pictures** folder is a great place)

5. Pick the file type you want
a. Choose **JPEG** from the list of file type options (JPEG is the most common, thus the safest bet)

6. Click on **Export**



Enjoy your enhanced image!

Want to learn more advanced features for GIMP?

Go to <https://www.gimp.org/tutorials/> to read or watch tutorials



You can also access a great *GIMP Essential Training* course on Lynda.com, available for free with your Surrey Libraries card.